

# Create an enabling garden environment



1300 66 77 88  
[enablingenvironments.com.au](http://enablingenvironments.com.au)

**alzheimer's**wa  
the dementia experts

# Eight simple dementia enabling environmental principles in support of a person living with dementia



1. Sustainability



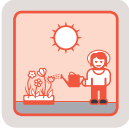
2. Orientation



3. Accessibility



4. Socialisation



5. Meaningful activity



6. Reminiscence



7. Sensory stimulation



8. Safety

**References:** Graham-Cochrane, Tara. 2010. Gardens that Care: Planning Outdoor Environments for People with Dementia. South Australia, Australia: Alzheimer's Australia SA Inc.

Dementia Training Australia, [dta.com.au](http://dta.com.au)

1300 66 77 88  
[enablingenvironments.com.au](http://enablingenvironments.com.au)

**alzheimer's**wa  
the dementia experts